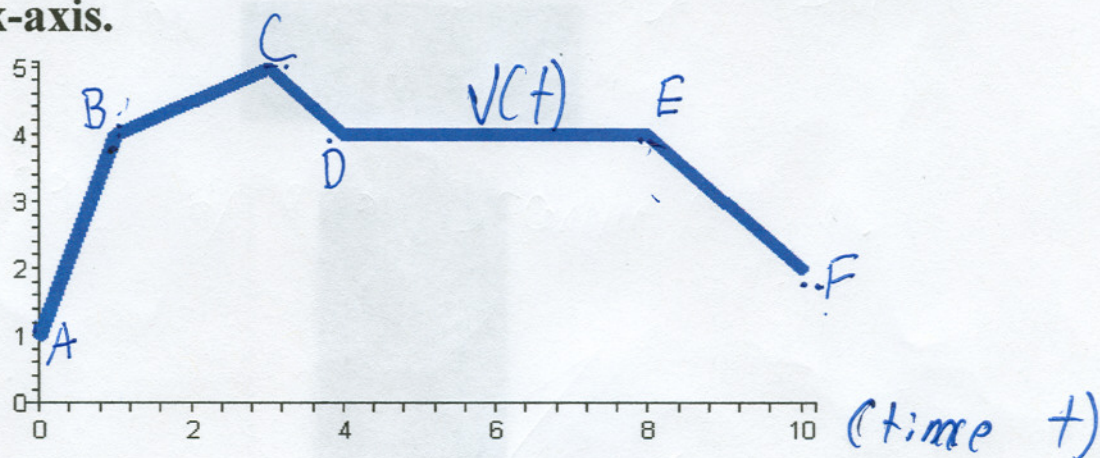


## Calc I Quiz 2

- 1) The accompanying figure shows the velocity versus time curve for a particle moving along the x-axis.



- a) From  $8 \leq t \leq 10$ , express  $v(t)$  in terms of time  $t$ .
- b) Find the acceleration of the particle from  $1 \leq t \leq 3$ .
- c) Where does the particle have its greatest acceleration? Why?

- 2) Sketch the graph  $f(x) = (x+1)^{(1/3)} + 2$  by making appropriate transformations to the graph of a basic power function.

$A = (0, 1)$   
 $B = (1, 4)$   
 $C = (3, 5)$   
 $D = (4, 4)$   
 $E = (8, 4)$   
 $F = (10, 2)$