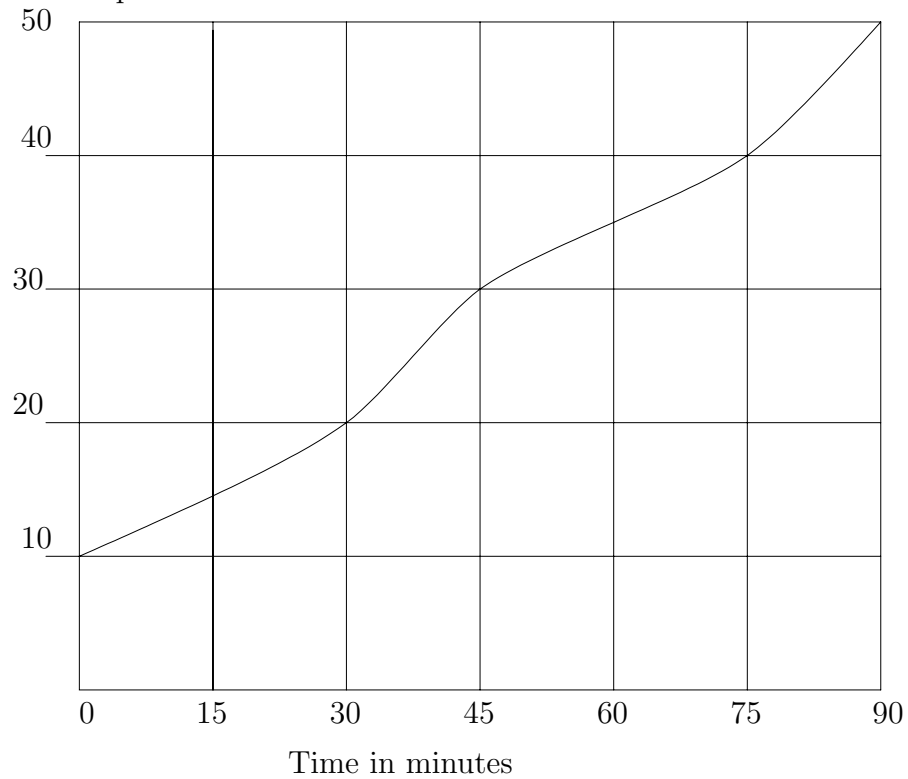


Mathematics 122

Quiz #21

Name: _____

The speed of a car over a period of 90 minutes is shown in the following graph.
Speed in mph



(Note that the speed is in miles per hour and that the time is given in minutes. So you should change the minutes to hours. That is 15 minutes = .25 hours etc.)

(1) What does one square on the grid represent in terms of distance?

(2) Give an estimate on how far the car went in the first half hour.

(3) Give an estimate for the distance covered by the car in time between $t = 30$ and $t = 90$.
