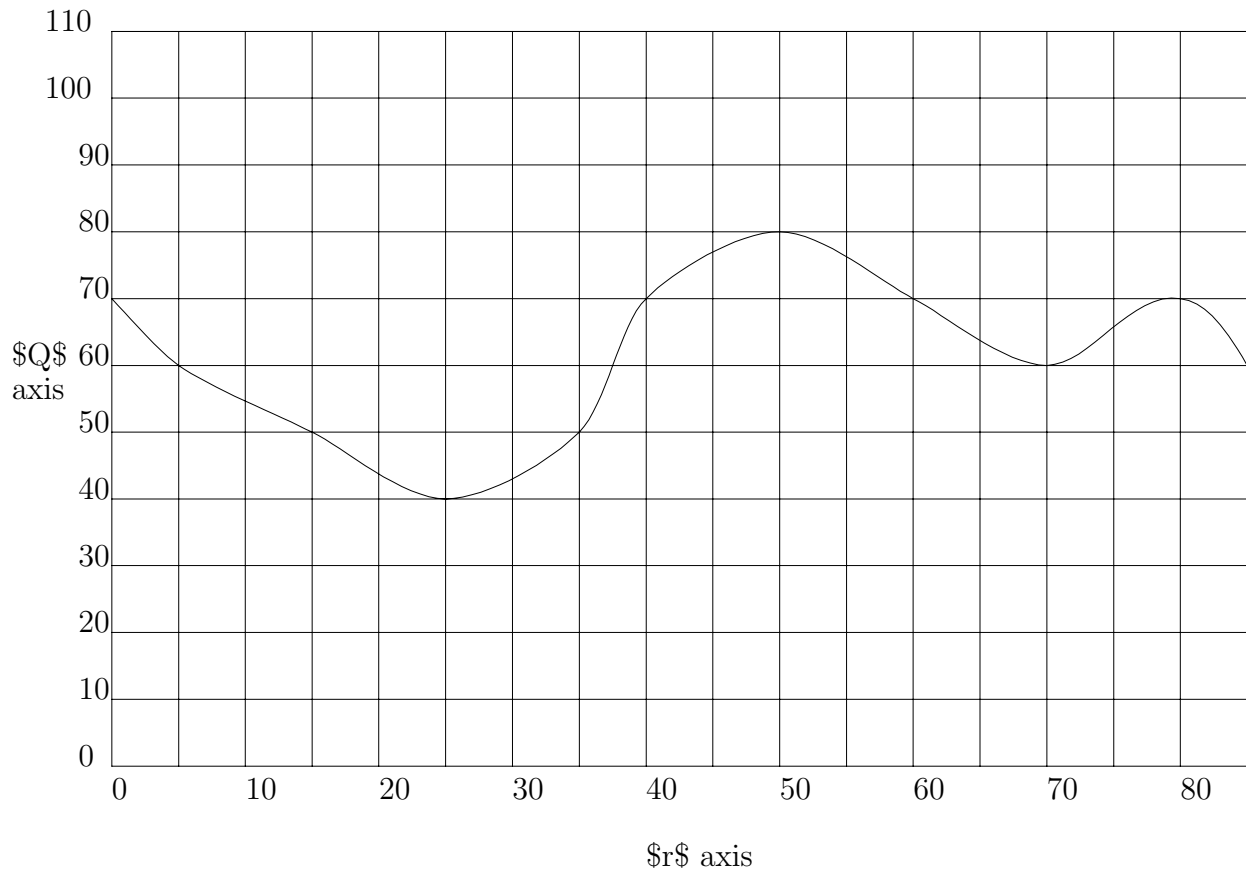


# Mathematics 122 Quiz #2

Name: \_\_\_\_\_

A function  $Q = f(r)$  is given by the graph below.



1. What are the following numbers:

(a)  $f(15) =$

(b)  $f(50) =$

(c)  $f(65) =$

(d)  $f(57) =$

2. Solve the following

(a)  $f(r) = 40$

$r =$  \_\_\_\_\_

(b)  $f(r) = 60$

$r =$  \_\_\_\_\_

3. What is the largest that  $Q = f(r)$  becomes on the interval  $1 \leq r \leq 9.5$ ?

\_\_\_\_\_

4. For that value of  $r$  is  $Q = f(r)$  the largest?

\_\_\_\_\_