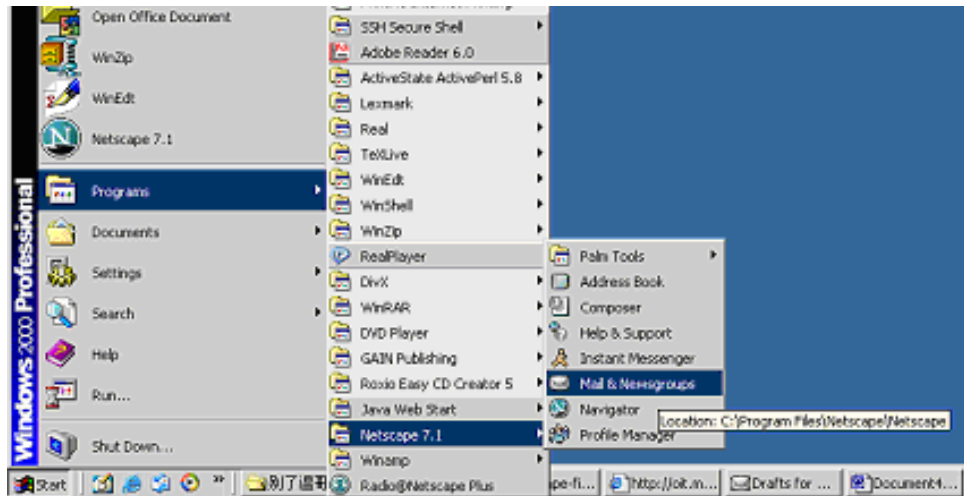


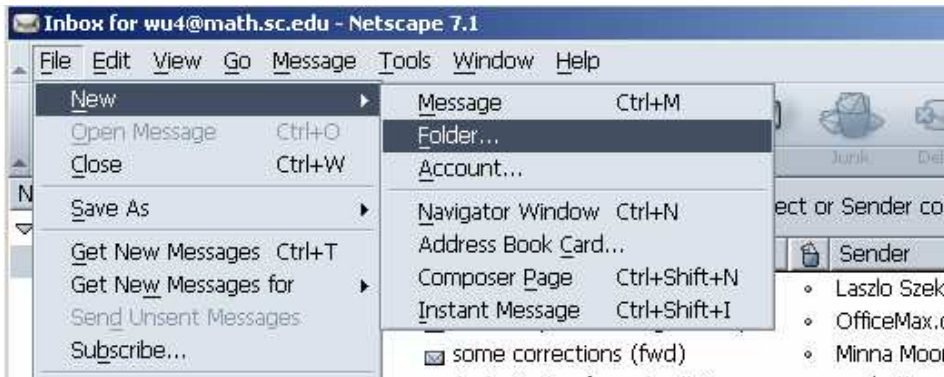
Spam Filtering with Netscape Communicator

Netscape Mail allows you to do mail filtering. This tutorial will show you how to set up spam filters.

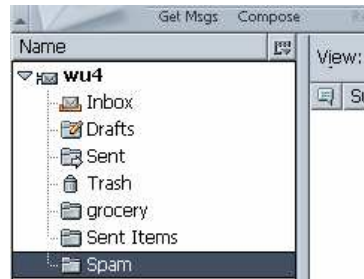
1. Open Netscape Mail. Click **start**, then click on **programs**, choose **netscape7.1**, then choose **Mail & Newsgroup**.



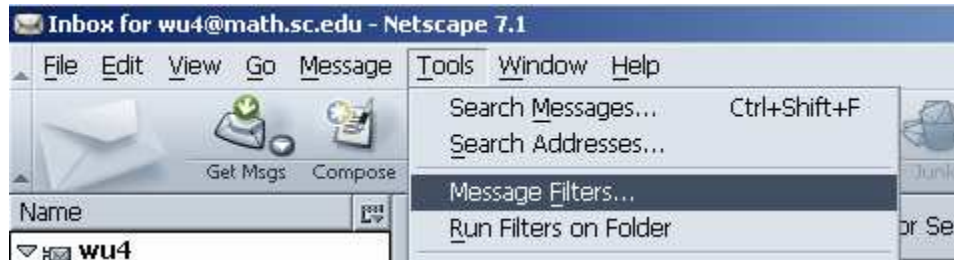
2. Create a new folder. From Netscape Mail, click **File** and choose **New** and choose **Folder**.



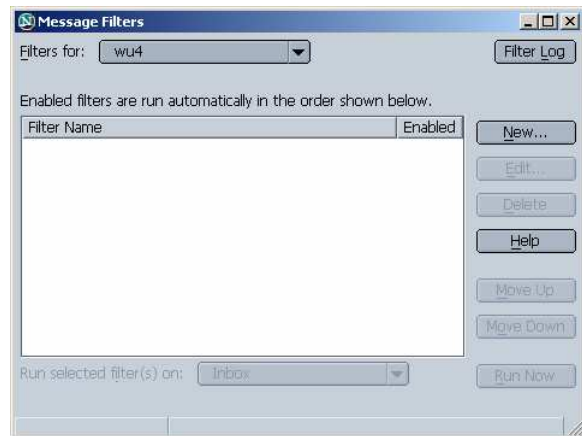
3. The following windows will pop up.



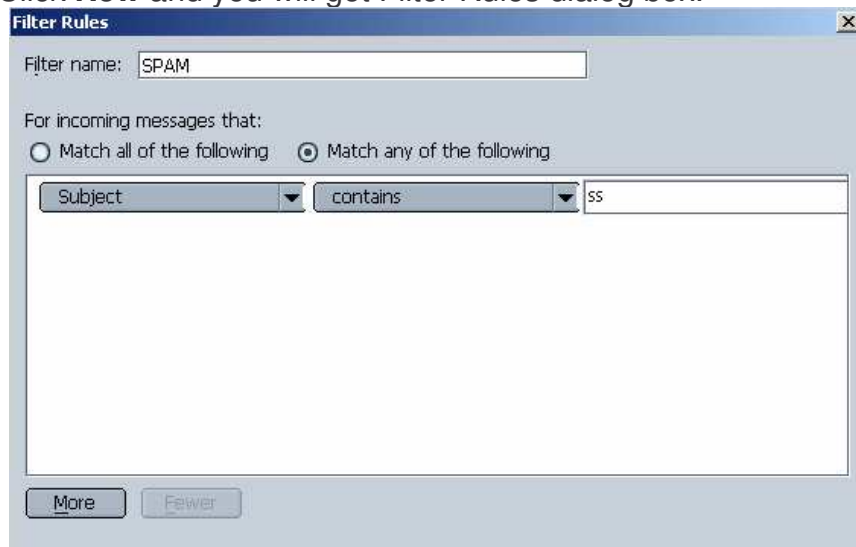
4. Set the name to Spam (or whatever you want) and click **ok**. You now have the folder Spam under your mail folder.
5. From Netscape mail, click on **Tools** from the menu and click on **Message Filters**.



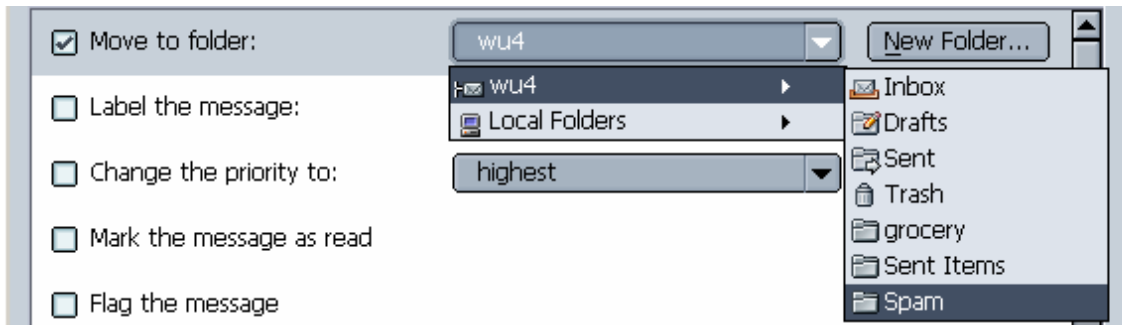
6. Now you can see the Message Filters dialog box.



7. Click **New** and you will get Filter Rules dialog box.

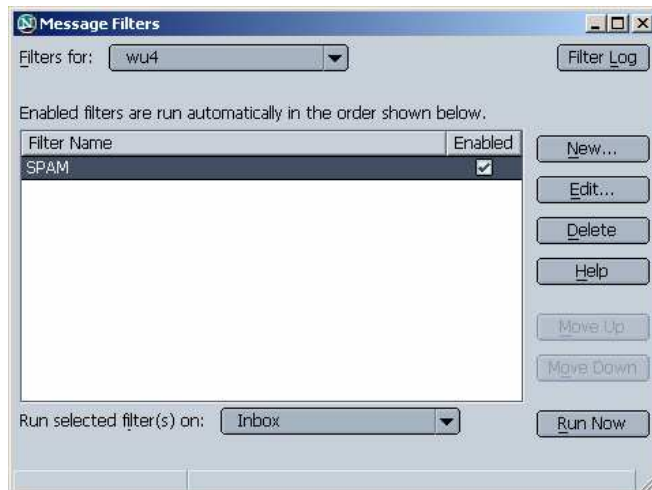


8. **Type a name** for the filter (e.g. SPAM) in the Filter name box.
9. **Select the matching option.** We want to use "*at least one of the conditions*" so, select "**Match any of the following.**"
10. Input **ss** (how many ss depends on the spam alert level) in the input box next to **contains**.
11. Under **Perform this action**, choose **Move to folder**, and choose the folder you just created. (here it is Spam).



then click **OK**.

12. You will get following window.



13. Close this window and your filter has been successively set up..

Hope you enjoy using netscape message filter